



HDA

IT STARTS WITH A VISION.



HDA ARCHITECTS

WHO WE ARE

It Starts with a Vision is more than a motto; at HDA, it's the philosophy we live by.

In 1986, Jack Holleran, president of HDA, envisioned a professional service firm providing creative and timeless design with exceptional customer service. Since then, we have designed over 100 million square feet nationwide, totaling more than \$3 billion in construction costs and completed over 250 projects in more than 44 states.

Over our 36 plus year-old history, our team has provided architecture, interiors and master planning services across varied market segments to include office, beverage wholesaler, interiors, industrial / distribution, power retail centers, auto dealerships, multi-family, mixed-use, hospitality, and craft brewery market sectors.

Entrusting a project to our Architect-Led Design & Build Team limits the time and effort required of the client. It allows busy owners to focus on their core activities and rest easy knowing the project is being handled in the most professional, efficient manner possible. Our Design-Led approach applies innovative solutions and tighter controls over all aspects of the project, from preservation of the design to a close adherence to budget and construction schedule.

OUR SERVICES

BUILDING DESIGN

Architecture
Civil
Structural
MEP-FP

CONCEPTUAL FACILITY PLAN

CONSTRUCTION ADMINISTRATION

Coordinate Response to RFI's
Shop Drawing Approval
Certify Pay Applications
Project Close Out
Move-In Assistance
10-Month Walk Through
Contractor Selection
Contract Negotiation
Open Book Bidding
Construction GMP

INTERIOR DESIGN

Custom Casework
Furniture Procurement
Security Procurement
Audio/Visual Procurement

PROGRAMMING SPACE NEEDS

SITE SELECTION

Utilities Investigation
Regulatory Issues
Soils Investigation
Incentives

TAX INCENTIVE CONSULTING

NMTC
Tax Abatement
Opportunity Zone
Local, State & Federal Incentives

OUR CORE VALUES

QUALITY

PROFESSIONALISM

CREATIVITY

CAN-DO-ATTITUDE

INTEGRITY



DEL PAPA DISTRIBUTING

LOCATION | Texas City, Texas

SIZE | 165,000 SF

“Working with HDA Architects on our new facility was a very good experience. They brought a lot of knowledge to the table having designed so many beverage facilities. They definitely helped us design a facility that is ready for the future. I am very happy we engaged them.”

Bill Falkenhagen | Executive VP/CFO | Del Papa Distributing Co.



BEVERAGE



SILVER EAGLE DISTRIBUTING

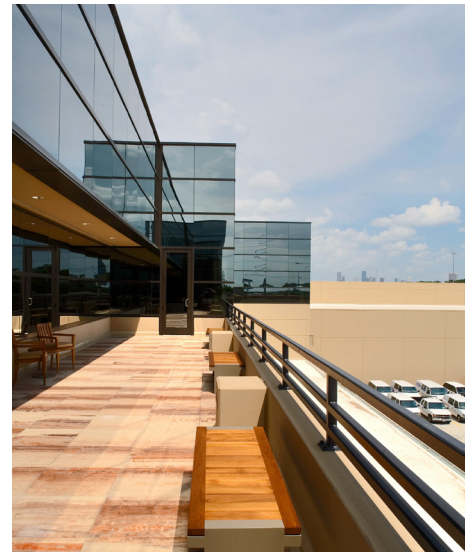
LOCATION | Houston, Texas

SIZE | 350,000 SF



“The distinct characteristics and look of our new corporate headquarters and distribution facility reflect the distinguished image of our brands. We are very excited about the unique design and features that were built into the structure. HDA was presented with a significant challenge and met that challenge in every aspect of the project.”

Bob Boblitt Jr. | VP/COO
Silver Eagle Distributors



ADAMS BEVERAGES

LOCATION | Opelika, Alabama

SIZE | 72,000 SF



“There was seamless continuity through every stage of the project. Thanks to the HDA team for delivering our employees a great facility to enjoy daily.”

Clay Adams | President | Adams Beverages



STANDARD SALES COMPANY

LOCATION | Odessa, Texas

SIZE | 158,550 SF



“Having designed so many facilities for other beer wholesalers, they bring good ideas and best practices in our new facility. Their design will allow us to adapt moving forward.”

Lanny Layman | President | Standard Sales Company



FISHER59

LOCATION | Denton, Texas

SIZE | 205,000 SF



“This new building was a labor of love and HDA’s team was tremendous to work with.”

Jody Fisher | Shared Services Manager | Fisher 59



AC HOTEL

LOCATION | St. Louis, Missouri

PROJECT SPECS | 94,220 SF, 7 Stories, 196 Rooms



A modern interior space featuring a long, low reception desk with a white marble top and a dark base. The background wall is covered in a grid of square, textured panels. The floor is made of light-colored tiles.

MULTI-FAMILY + HOSPITALITY

FORSYTH & CENTRAL

LOCATION | Clayton, Missouri

PROJECT SPECS | 419,000 SF, 25 Stories, 73 Condos,
180 Hotel Rooms, 300 Person Event Space



TWO TWELVE CLAYTON

LOCATION | Clayton, Missouri

PROJECT SPECS | 282,666 SF, 26 Stories, 250 Units



“Their design capabilities and the team of consultants really helped us streamline the process of meeting an aggressive budget and timeline.”

Chris Lynch | Principal | White Oak Realty Partners



1801 WASHINGTON

LOCATION | St. Louis, Missouri

PROJECT SPECS | 263,360 SF, 7 Stories, 184 Units



50 BEMISTON / STERLING HEIGHTS

LOCATION | Clayton, Missouri

PROJECT SPECS | 309,000 SF, 20 Stories, 270 Units



8250 FORSYTH CONDOS

LOCATION | Clayton, Missouri

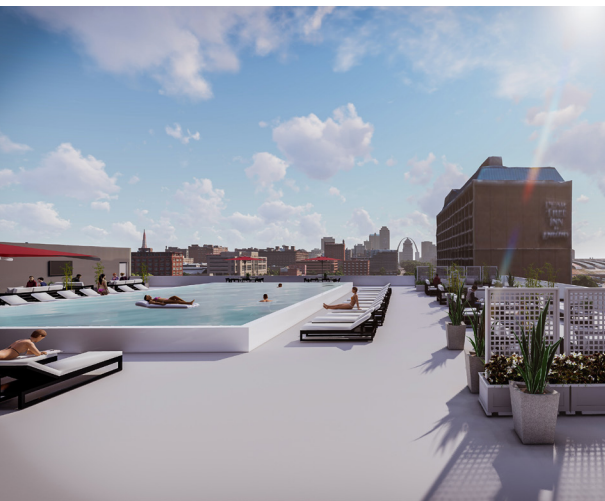
PROJECT SPECS | 4 Stories, 42 Units



100 JEFFERSON

LOCATION | St. Louis, Missouri

PROJECT SPECS | 470,000 SF, 266 Units, 11 Stories



40 GRAND

LOCATION | St. Louis, Missouri

PROJECT SPECS | 375,000 SF, 262 Units



THE RAIL

LOCATION | St. Louis, Missouri

PROJECT SPECS | 282,000 SF, 269 Units



FUN BEVERAGE

LOCATION | Kalispell, Montana

SIZE | 110,000 SF

“The decision to build a state of the art beverage distribution facility is a tremendous undertaking. As a result, we invested in the expertise of HDA Architects and we could not be more pleased in the results.”

Brian C. Clark | President | Fun Beverage

INTERIORS





SUMMIT BEVERAGE

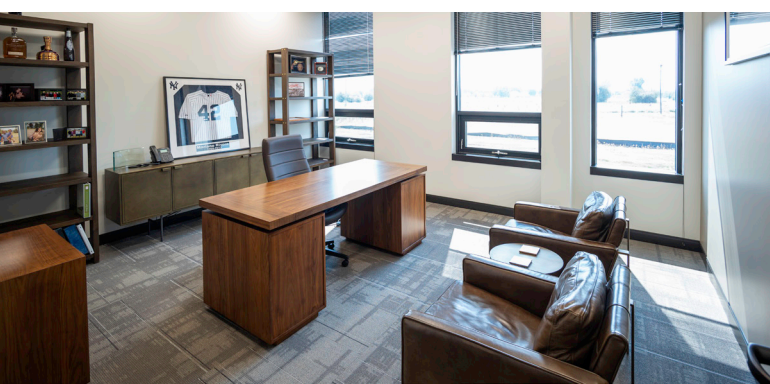
LOCATION | Missoula, Montana

SIZE | 114,295 SF



“Working with HDA and their experienced team proved to be invaluable. Not only their expertise in design and functionality, but their ability to communicate with contractors, city officials, and other stakeholders makes HDA the only choice.”

Greg Markovich | President | Summit Beverage



ADB COMPANIES

LOCATION | Pacific, Missouri

SIZE | 36,582 SF



“We are grateful for HDA and all the amazing partners that worked so hard to make ADB’s dream a reality.”

Rusty Keeley | CEO | Keeley Companies





BURKE BEVERAGE

LOCATION | McCook, Illinois

SIZE | 190,000 SF



“It has been a pleasure working with HDA Architects. From the beginning of the planning process to the final phase of construction, they made it very easy for our people to work on the project. They were very attentive to our needs and delivered everything we wanted.”

Kevin Burke | President | Burke Beverage



STANDARD SALES COMPANY

LOCATION | Lubbock, Texas

SIZE | 112,000 SF



“I’ve always heard about the positive experience of working with HDA through my peers in the industry. Now I can say I’ve experienced it first hand with our new facility. They are as good as I’ve read and heard.”

Joe Nemeth | Retired Branch Manager | Standard Sales



GG DISTRIBUTING

LOCATION | Tyler, Texas

SIZE | 219,150 SF

“We have been extremely pleased with our new building. HDA and it's staff are on the forefront of what a wholesale beverage distributor needs from their building. They are mindful of the importance of budgets, while not sacrificing building functionality. Class act across the board!”

Julian R. Rayzor | Sales Manager & Building Project Manager
GG Distributing, LLC



DISTRIBUTION + WAREHOUSING





CAPITOL CITY PRODUCE

LOCATION | Baton Rouge, Louisiana

SIZE | 97,250 SF



PATRIOT MACHINE

LOCATION | St. Louis, Missouri

SIZE | 158,000 SF



7G DISTRIBUTING

LOCATION | Davenport, Iowa

SIZE | 111,800 SF



“HDA really helped us ask the right questions early on in the design process, from site due diligence and facility sizing to layout design and electrical & mechanical system selection. HDA’s experience in building these kinds of facilities gave us great confidence that we were getting the right design specifications for our application and their on-going program management throughout construction held everyone accountable for getting the job done right. It is always a pleasure working with true experts.”

Mason Lee | Director of Operations | 7G Distributing



FRONTLINE LOGISTICS CENTER

LOCATION | Ocala, Florida

SIZE | 457,054 SF



RIVER CITY BUSINESS PARK

LOCATION | St. Louis, Missouri

PROJECT SPECS | 454,000 SF, 3 Buildings



TIMBERLAKE CORPORATE CENTER

LOCATION | Chesterfield, Missouri

PROJECT SPECS | 350,000 SF, 3 Buildings



A low-angle, upward-looking shot of a modern office building's exterior. The facade is composed of large, rectangular glass panels set within a grid of light-colored concrete or metal frames. The glass reflects a clear blue sky with scattered white clouds. The perspective creates strong diagonal lines across the frame, emphasizing the building's height and architectural structure. The word "OFFICE" is centered in the middle of the image in a clean, white, sans-serif font.

OFFICE

FRONTENAC OFFICE

LOCATION | Frontenac, Missouri

SIZE | 36,000 SF



“HDA listened and delivered exactly what DESCO had in mind for this marquee St. Louis site. Throughout the project there was an authentic feeling of partnership and trust.”

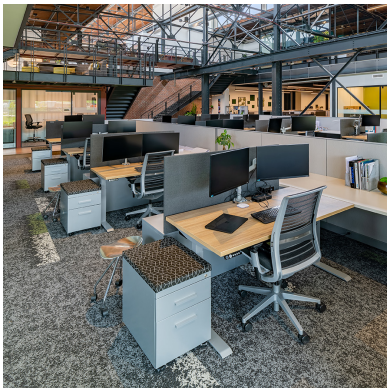
Franklin Sears | VP of Development,
Design & Construction | The DESCO Group



GREEN STREET & HDA HEADQUARTERS

LOCATION | St. Louis, Missouri

SIZE | 36,000 SF





WESTAR II

LOCATION | Weldon Spring, Missouri

SIZE | 80,000 SF



“We’re extremely pleased with the creativity, functionality, and efficiency of the results HDA delivered. They made the experience a sincere pleasure.”

Robb Topping | CEO | Westar Aerospace & Defense Group



MURPHY COMPANY

LOCATION | Olivette, Missouri

SIZE | 60,000 SF



“They were great to work with and gave us a very practical design. The impact was where it belonged and the way we wanted it to be. The amount of money we had to spend was spent very well.”

Tim Pederson | VP | Murphy Company



WATERWAY OF MERIDIAN

LOCATION | Parker, Colorado

SIZE | 14,000 SF

“Waterway has enjoyed the positive, client-centered approach of the team at HDA. They were able to meet an extremely aggressive time line and were an important member of our development team.”

Michael Goldman | VP/General Counsel | Waterway Gas & Wash



RETAIL + COMMERCIAL



MUNGENAST LEXUS

LOCATION | Manchester, Missouri

SIZE | 70,000 SF



“I engaged HDA Architects to design our new Lexus Dealership because of their expertise and reputation. This project was very complex being the first LEED Certified Lexus Dealership in the nation. HDA Architects exceeded my expectations in regards to their design and customer service. I am extremely happy with my decision to work with them.”

Ray Mungenast | Owner
Dave Mungenast Lexus of St. Louis



MERCEDES BENZ

LOCATION | St. Louis, Missouri

SIZE | 35,000 SF



MERCEDES BENZ

LOCATION | Kansas City, Missouri

SIZE | 30,000 SF

COLUMBIA MIXED-USE

LOCATION | Columbia, Missouri

PROJECT SPECS | Contains Six, Three-Story Mixed-Use Buildings

Endeavor East and West - 44 Units Each , 77,400 SF

Mainstreet Building I - 55 Units, 92,657 SF

Mainstreet Building II - 104 Units, 123,828 SF

Mainstreet Building III - 64 Units, 93,770 SF

Mainstreet Building IV - 60 Units, 96,453 SF



ANew

LOCATION | St. Louis, Missouri

SIZE | 4,250 SF



“We are excited about the future of Anew and all that it will bring to our community and Big Brothers Big Sisters of Eastern Missouri. We exist to ensure that children grow up with love, hope, and opportunity. Anew is another way for us to live out our purpose.”

Rebecca J. Hatter | President/CEO
Big Brother Big Sister of Eastern Missouri



